

STUDIO Lighting AI

PHOTOSHOP ACTION

HELP FILE

Photoshop Add-ons Instruction Guidebook

wallow

Thank you for Downloading!

IMPORTANT!

PLEASE WATCH DEMONSTRATION VIDEO BELOW

The video below will demonstrate how to use the action and how to customize the artwork. The video covers some important techniques that you will want to use after the action has finished.

CLICK HERE TO WATCH THE VIDEO TUTORIAL

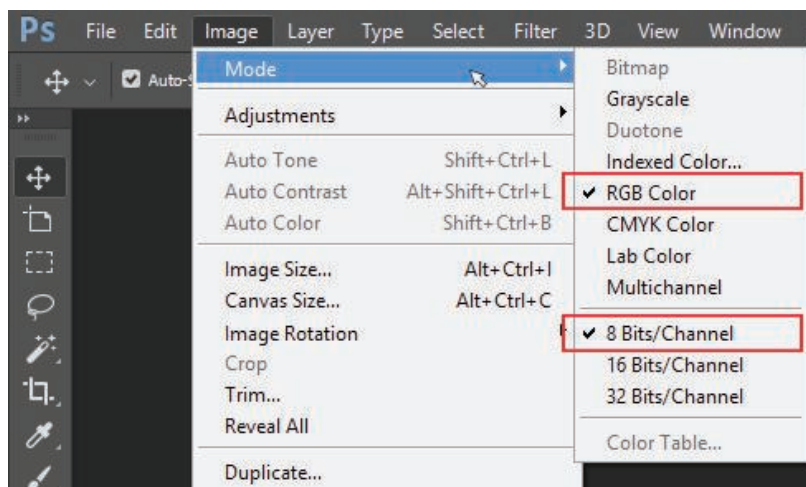
<https://youtu.be/9h6ienN0o4Y> 

This action has been tested and works perfectly in **Photoshop 2026+**. It is not compatible with older versions of Photoshop.

STEP BY STEP GUIDE

How to SETUP

- 1, Open your image in Photoshop
- 2, Set image mode to **RGB color** & **8 Bits/Channel**.

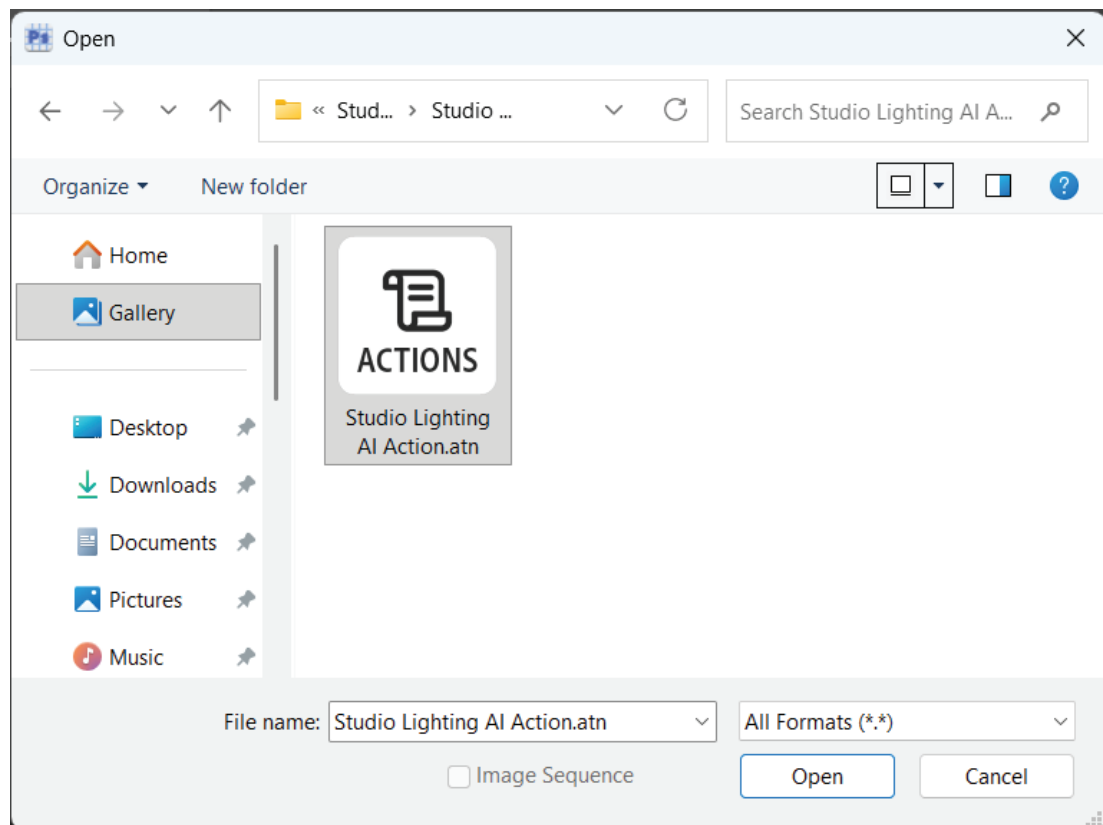


- 3, For the best results, use photos less than 2,048px size.

How to *INSTALL*

4t, Install Action files.

- a) Inside Photoshop, go to the File > Open...
- b) Inside the Open window, navigate to the **Studio Lighting AI Action** folder which you downloaded.
- c) Navigate inside the **Install_files_inside** folder
- d) Select following file - **“Studio Lighting AI Action.atn”**
- e) Click **Open** to load files in **Photoshop**.

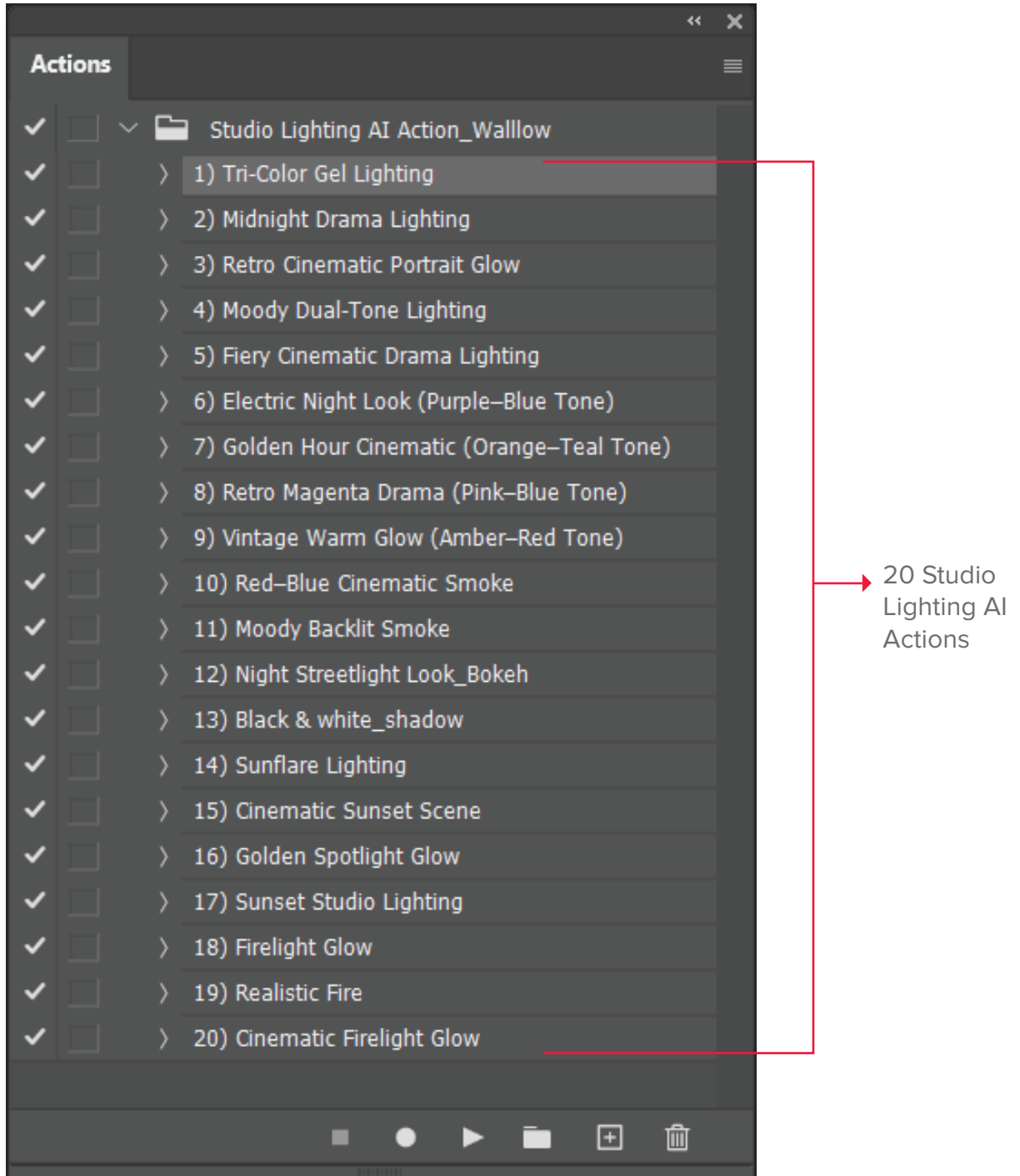


How to *PLAY ACTION*

5, Open Action panel by going to **Window > Actions**.

20 Studio Lighting actions included.

Select any action, example: “**1) Tri-Color Gel Lighting**” action and click **Play**.



Please refer to the video tutorial if you need assistance with these steps.

Each time you play an action, you get a slightly different variation — so keep experimenting

if you try this action on very large images (For example, image with 4000 × 5000px), the results might look a little soft or blurry.

*This happens because NanoBanana currently has some size limitations inside Photoshop.
But don't worry — there's a simple fix.*

*Just resize your image to around 2000px on the longer side.
Then run the action again...
Now we just need to upscale the image to bring back details.*

*To upscale, go to Image, Generative Upscale.
Here you'll see multiple AI models, like Firefly and Topaz.
Choose Topaz Gigapixel, set the scale to 2x or 4x, and hit Upscale.*

Perfect — the photo will be fully restored.

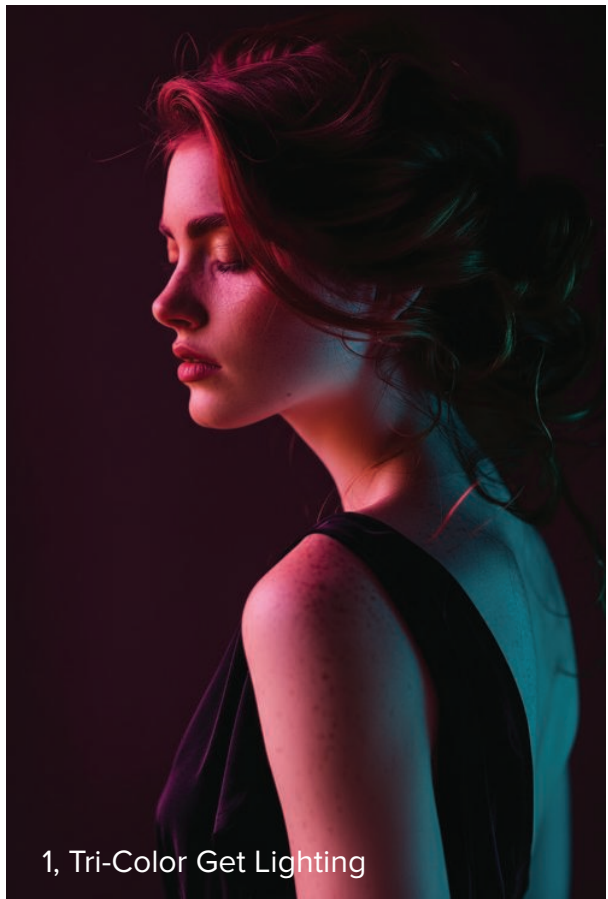
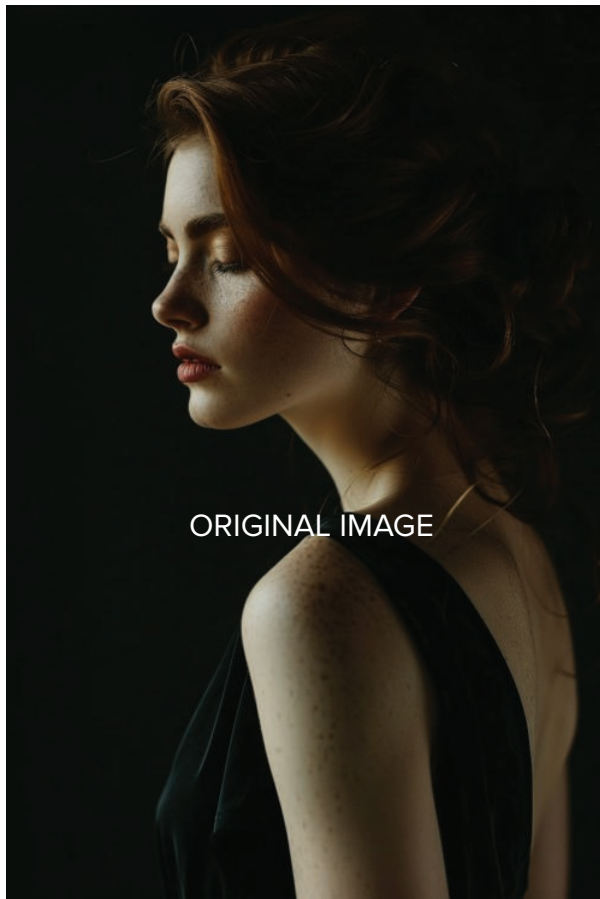
AFTER

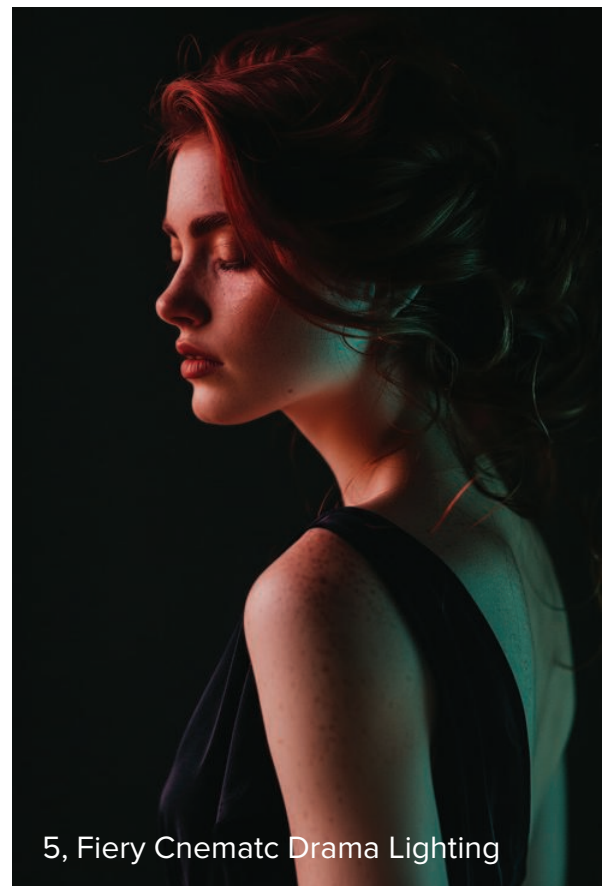
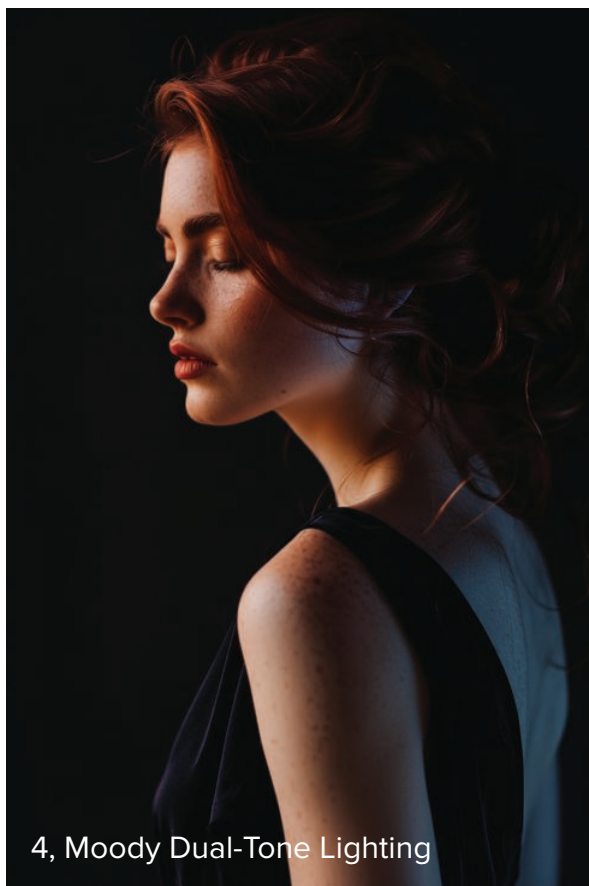
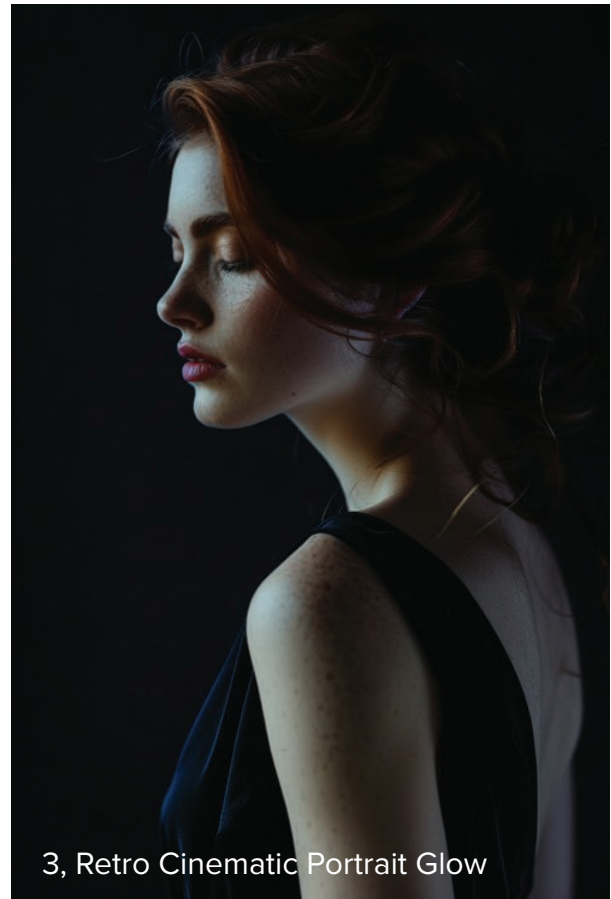
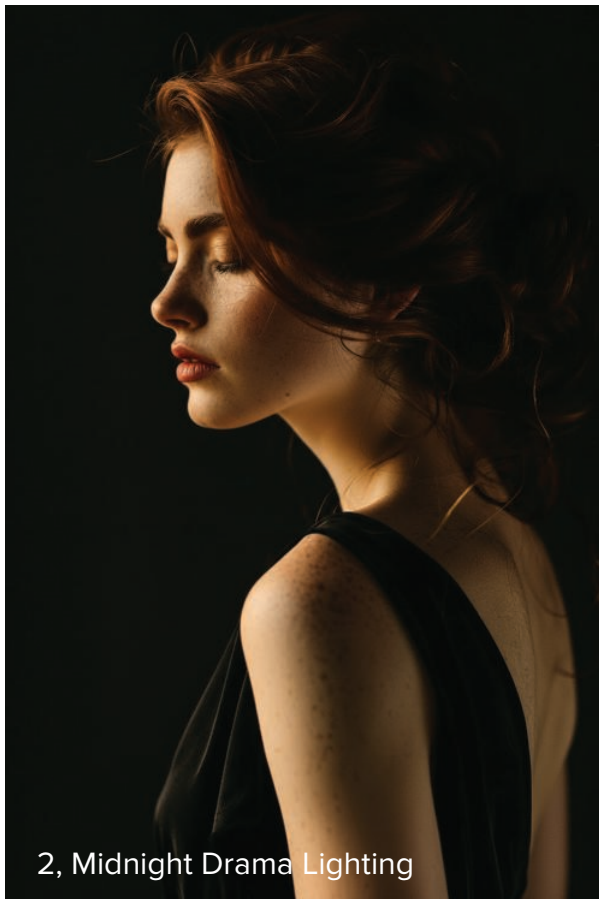
(11, Moody Backlit Smoke)

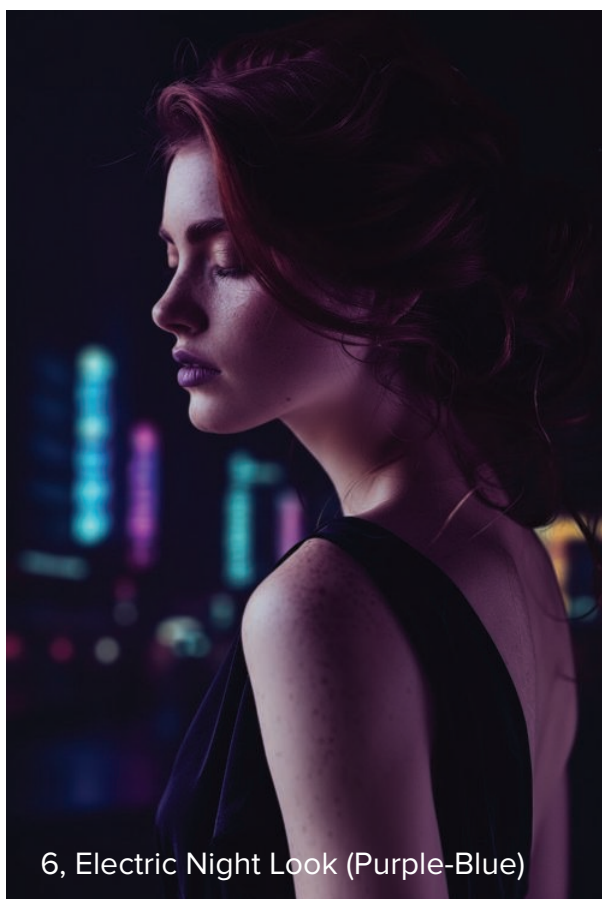
BEFORE



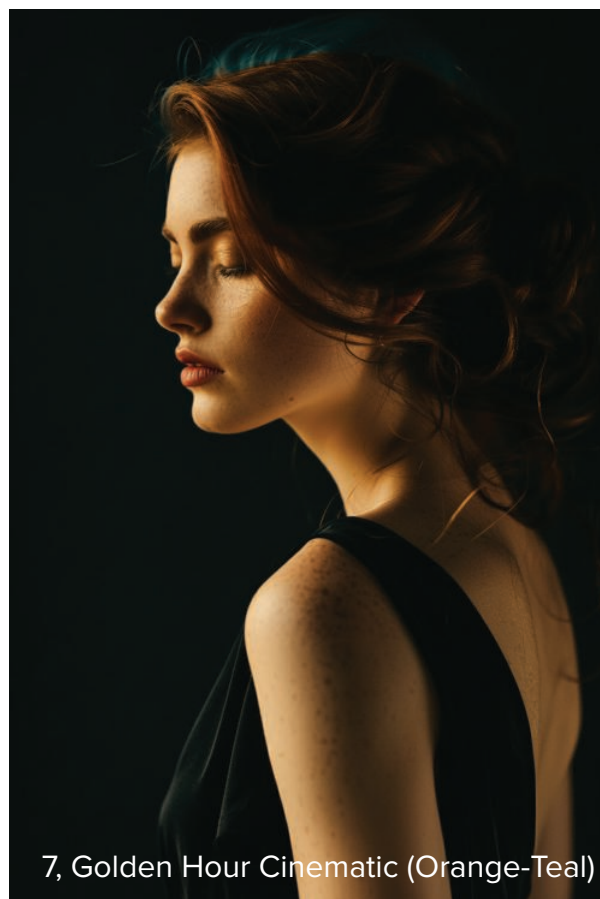
RESULTS



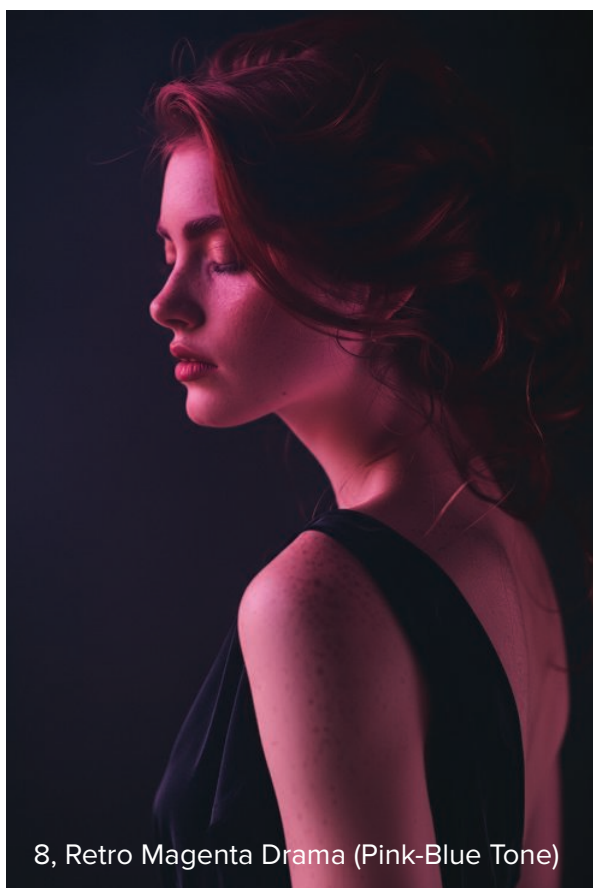




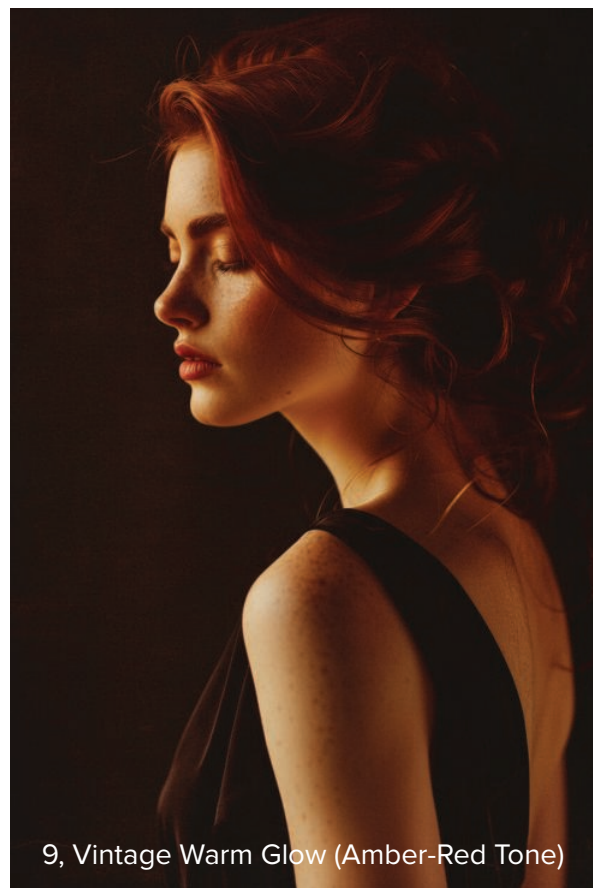
6, Electric Night Look (Purple-Blue)



7, Golden Hour Cinematic (Orange-Teal)



8, Retro Magenta Drama (Pink-Blue Tone)



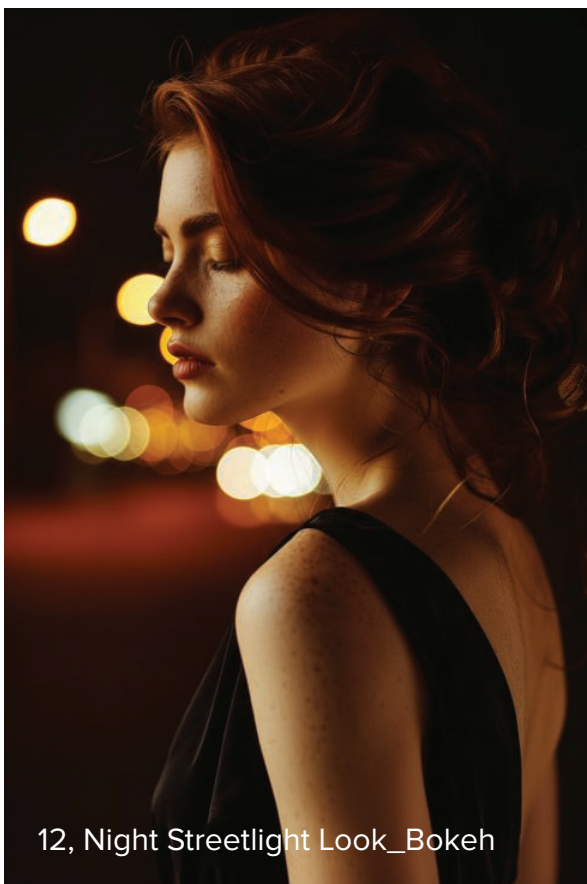
9, Vintage Warm Glow (Amber-Red Tone)



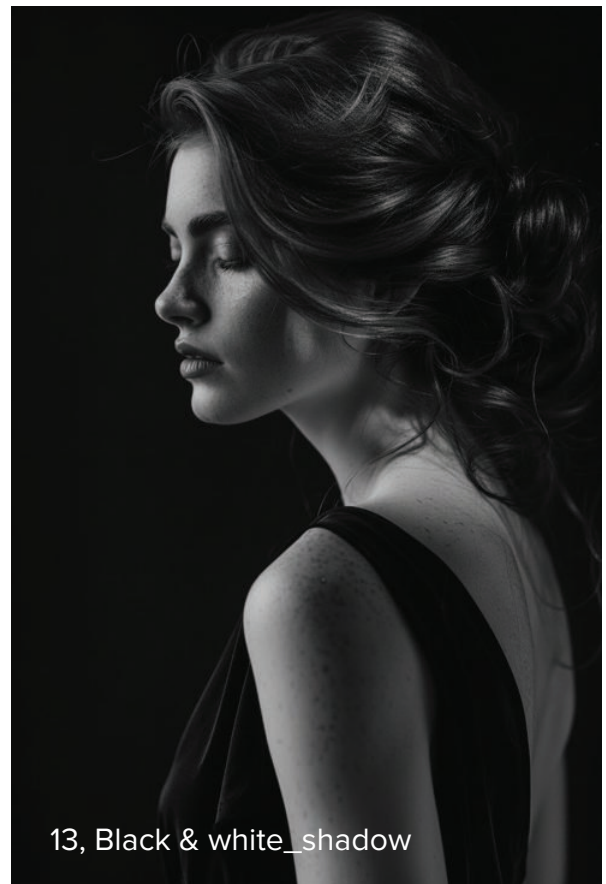
10, Red-Blue Cinematic Smoke



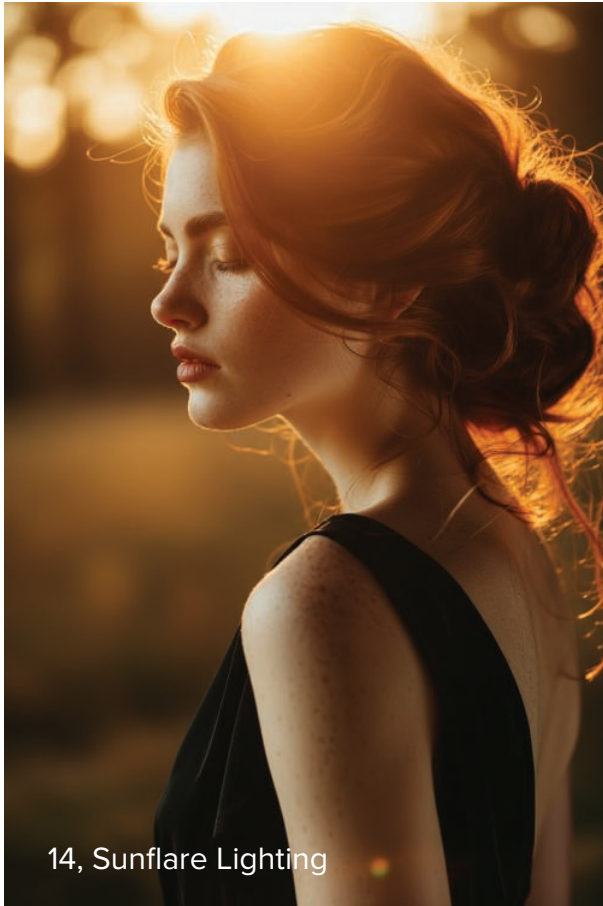
11, Moody Backlit Smoke



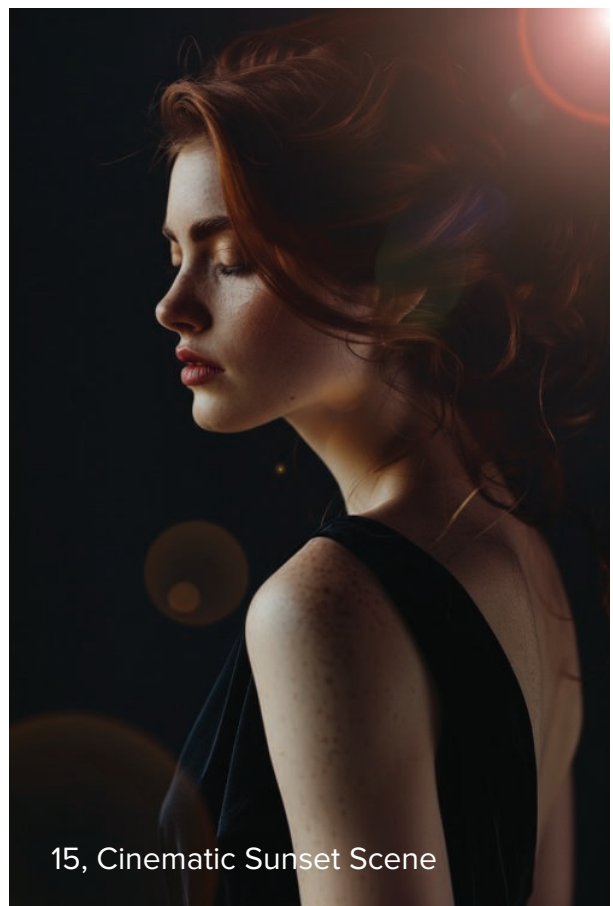
12, Night Streetlight Look_Bokeh



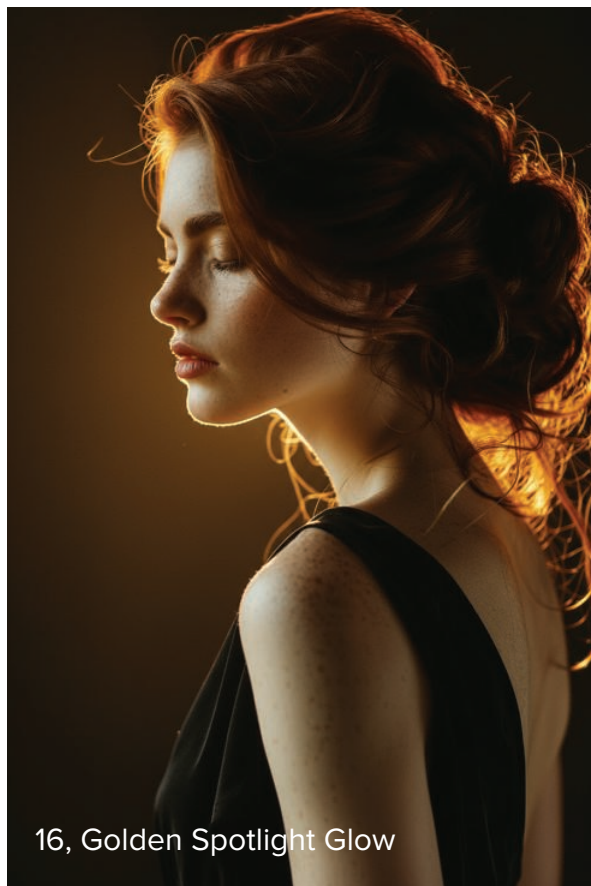
13, Black & white_shadow



14, Sunflare Lighting



15, Cinematic Sunset Scene



16, Golden Spotlight Glow



17, Sunset Studio Lighting



Each time you play an action, you get a slightly different variation — so keep experimenting

NEED HELP?

Please message us or email to
wallowws@gmail.com

Unlimited Downloads from \$11.99/Month



Thank You & Warm Hugs!

We are truly grateful for your presence in our creative journey. Our purpose is to *empower creative people*.

GET UNLIMITED DOWNLOADS

LEARN AI Photo Editings Tricks

For the latest AI video tutorials and freebies, check out our YouTube channel below.



walllow.com

